

TV Highway Safety & Transit Project CAC Meeting #2

February 2026



Agenda

- Introductions
- Community Agreements
- Corridor Wide Improvements
- Cornelius Stop Refinement
Input
- CAC Chair Election
- Next Steps



Community Agreements

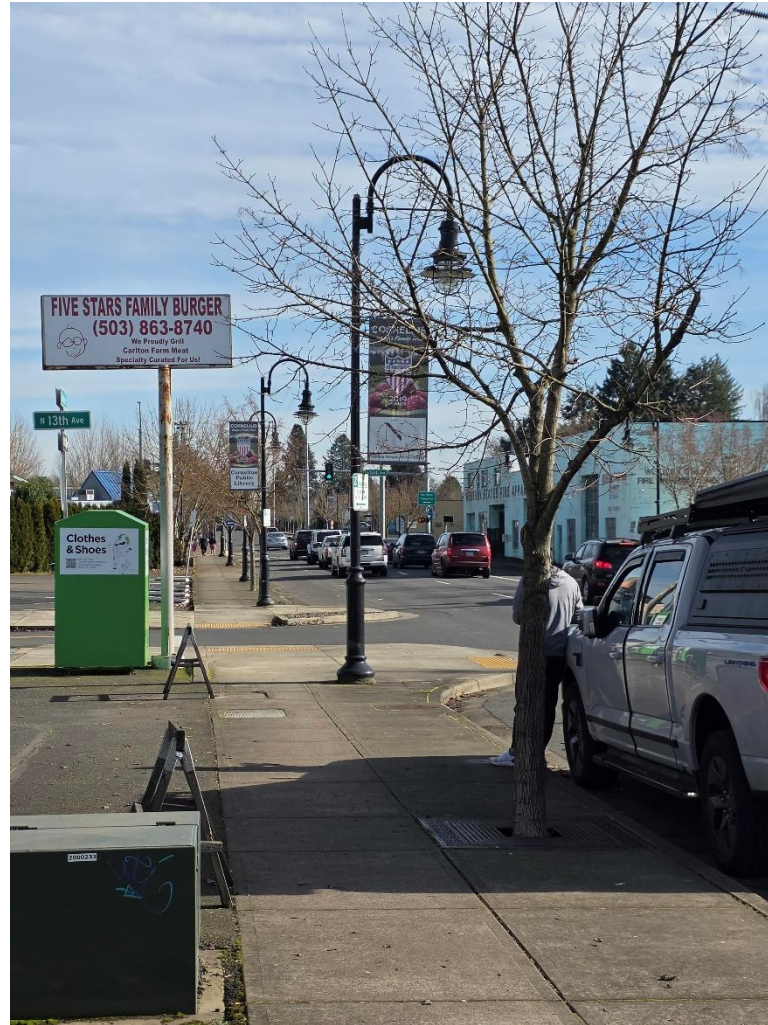
- Assume Positive Intentions
- Lean In & Engage
- Be Conscious of Pace & Volume of Speech
- Prepare in Advance
- Share the Roadway
- Keep the Goal in Mind



Corridor Wide Improvements



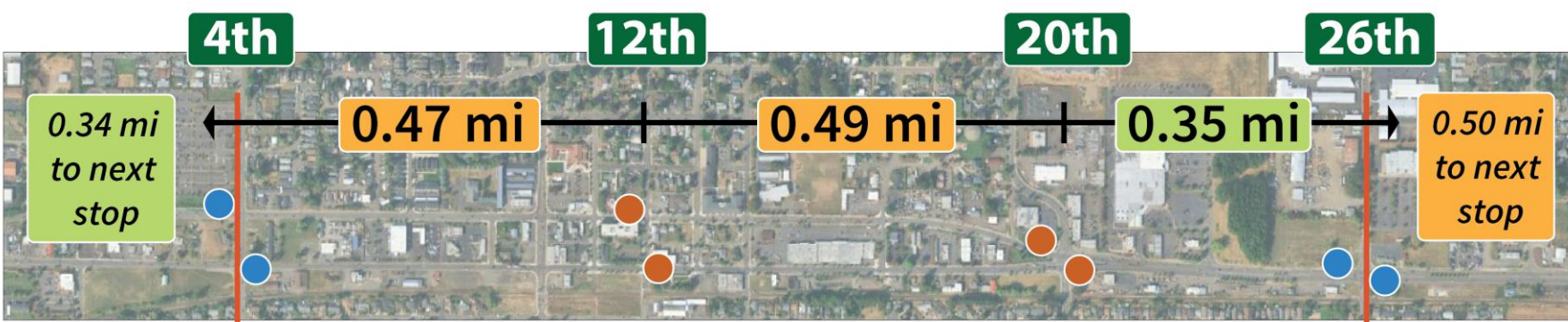
Downtown Cornelius



Additional Analysis and Context

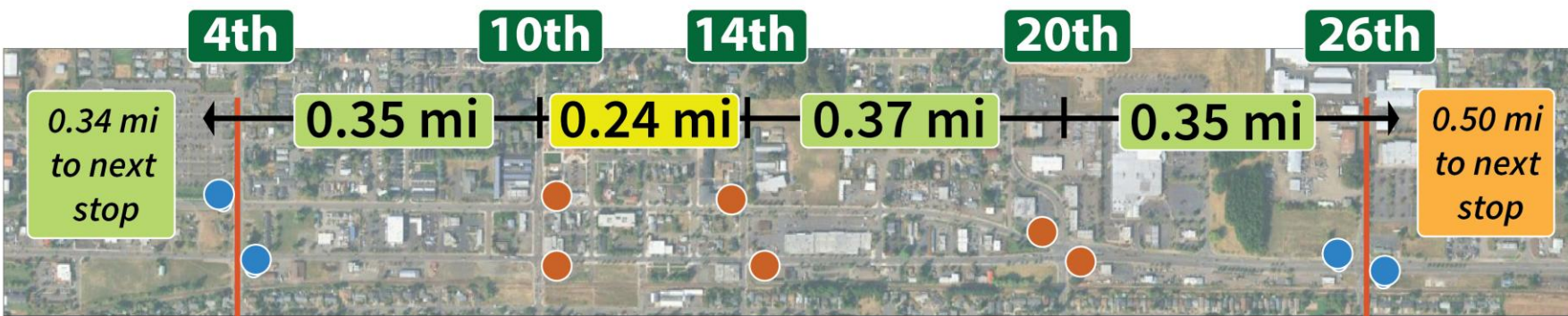
- Refocus on Options A, B, C
- Community Informed Elements
- Ride Connection Context
- Zoomed in context – 10th, 12th, and 14th
 - Walking Distances
- Zoomed in context – 20th and Fred Meyer Driveway (FM DWY)





Option A
12th & 20th

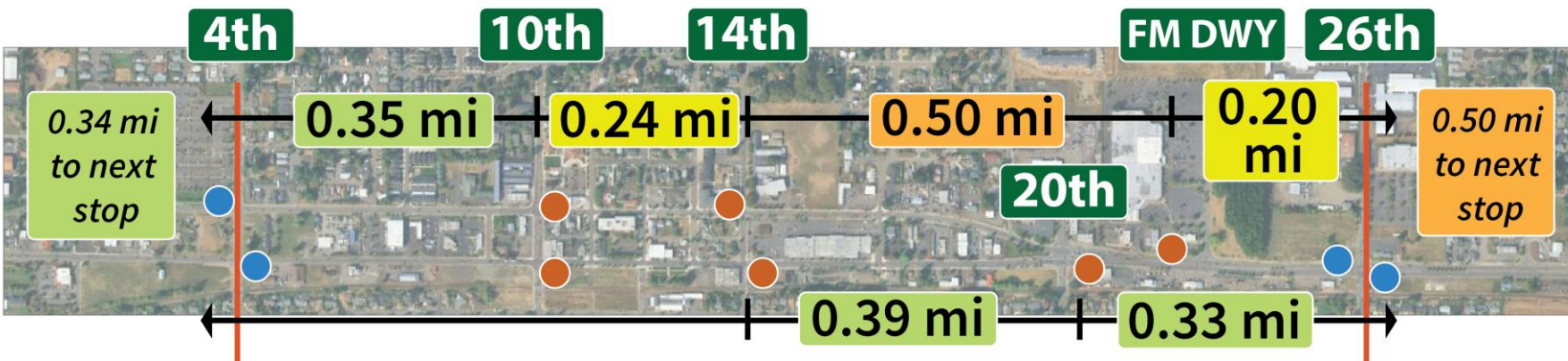
In a consistently built-up area like this, there is a range of spacing that is viable.



Option B
10th, 14th & 20th

Recommended:
1/3 (0.33) miles to
1/2 (0.5) miles

Minimum:
1/4 (0.25) miles,
though closer may be necessary



Option C
10th, 14th & 20th (EB),
FM DWY (WB)

LEGEND

- lower end
- average
- higher end

Station Placement Combinations Options for Discussion



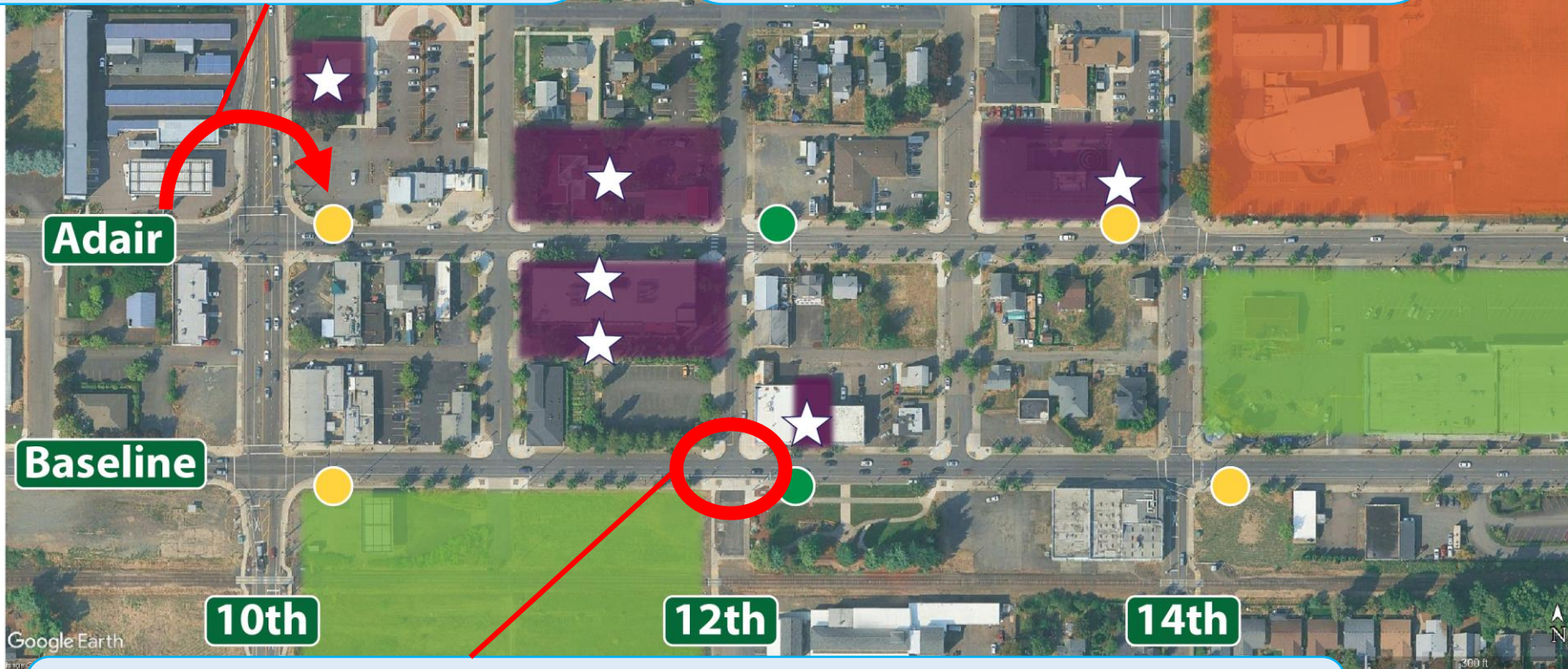
Background on Option Development

Community Informed Elements

These options were developed after outreach and analysis conducted by the project team over the last 2 years. While we could not include all ideas we heard from the community, feedback was incorporated into the details of the options presented today.

Shifting westbound station at 10th from farside to nearside to be closer to destinations

Not shown: Including option that uses existing stop at the Fred Meyer driveway, accounting for future development

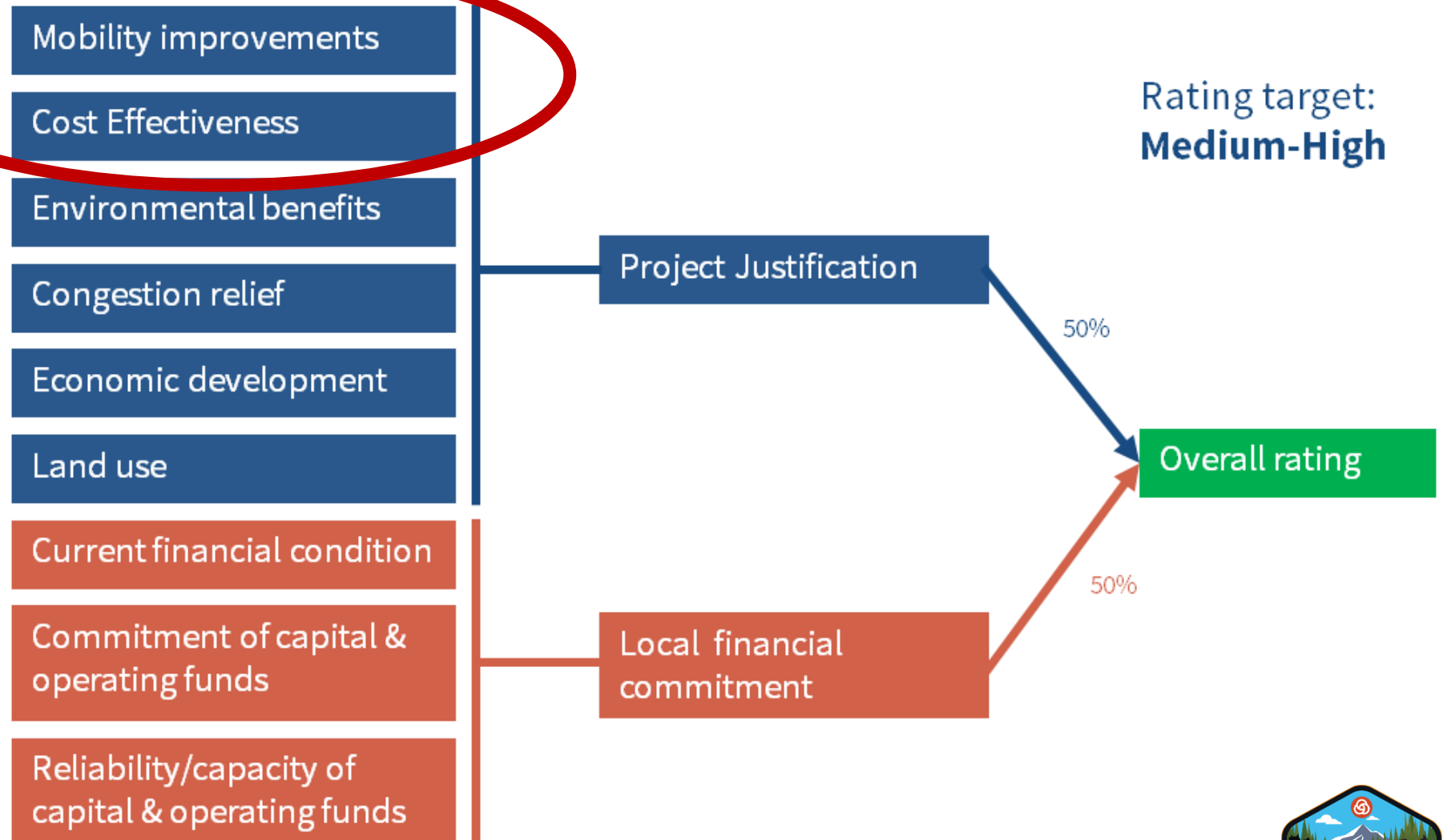


- ### LEGEND
- New Elementary School, Future Community Center and Plaza
 - City Owned Property for Development (Details TBD)
 - Key Community Destinations
 - Option A - 12th
 - Options B & C - 10th & 14th
 - Assumed Entry

Including a Rapid Flashing Beacon and crosswalk at 12th and Baseline to support walking network for all options

Clarification on FTA Eligibility

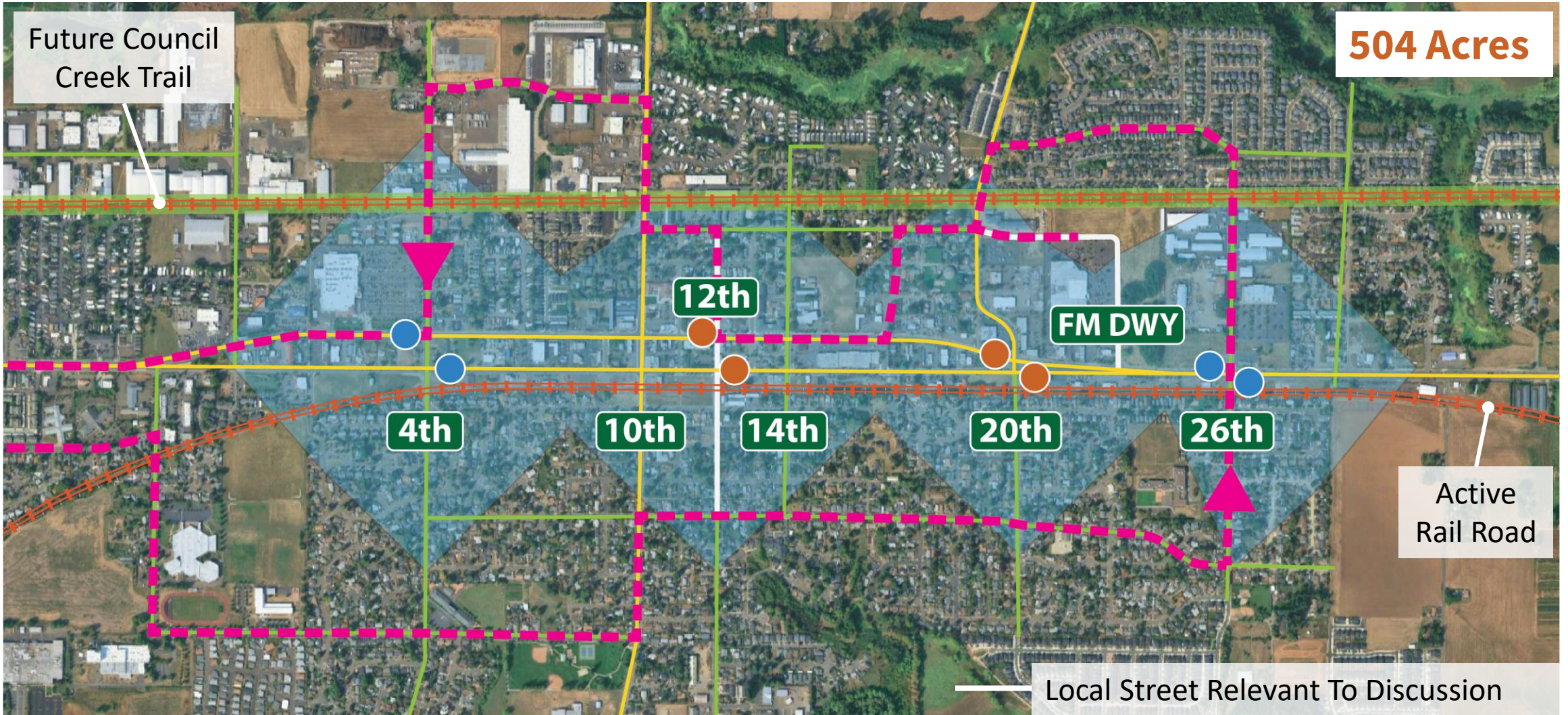
*Directly related
to the discussion
of stop spacing
and placement*



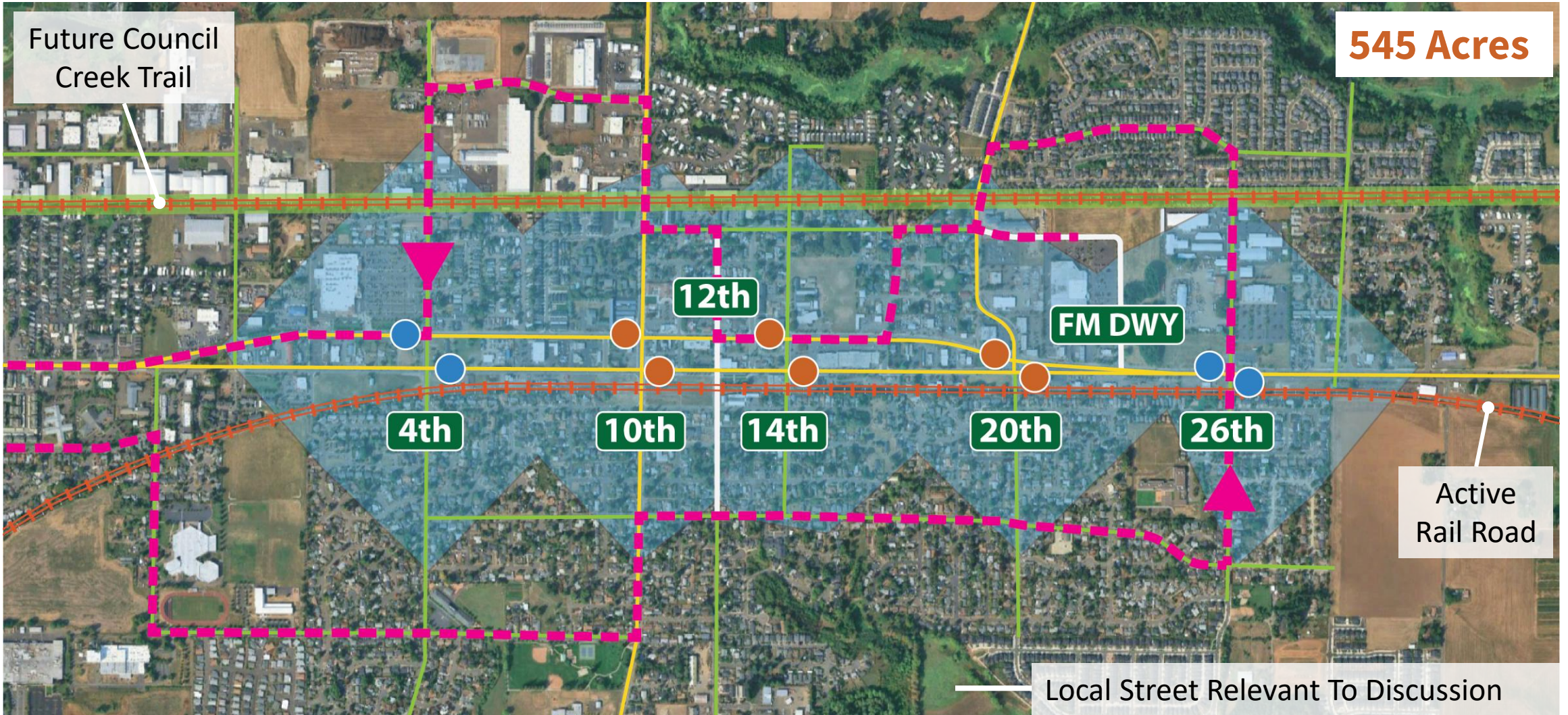
Ride Connection Context

Provided for reference based on Jan. 12 meeting discussion.

We added the route into the walkshed graphics to summarize the information.



1/3 Mile Walkshed – Option A – 12th & 20th

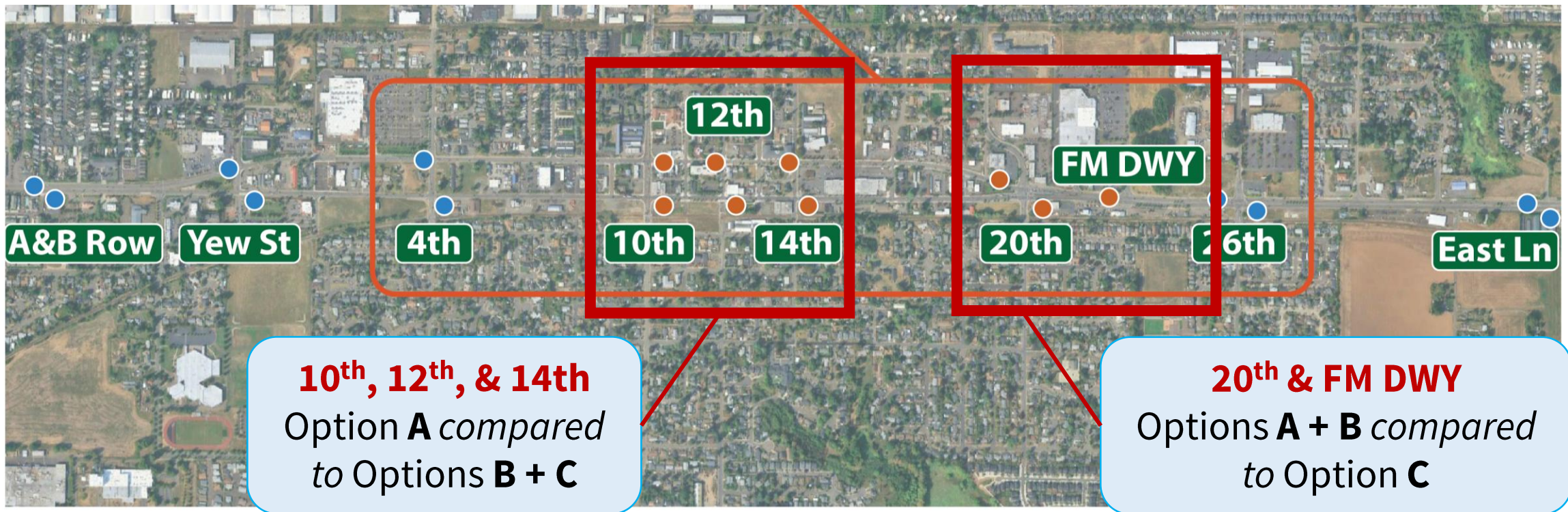


1/3 Mile Walkshed – Option B – 10th, 14th & 20th

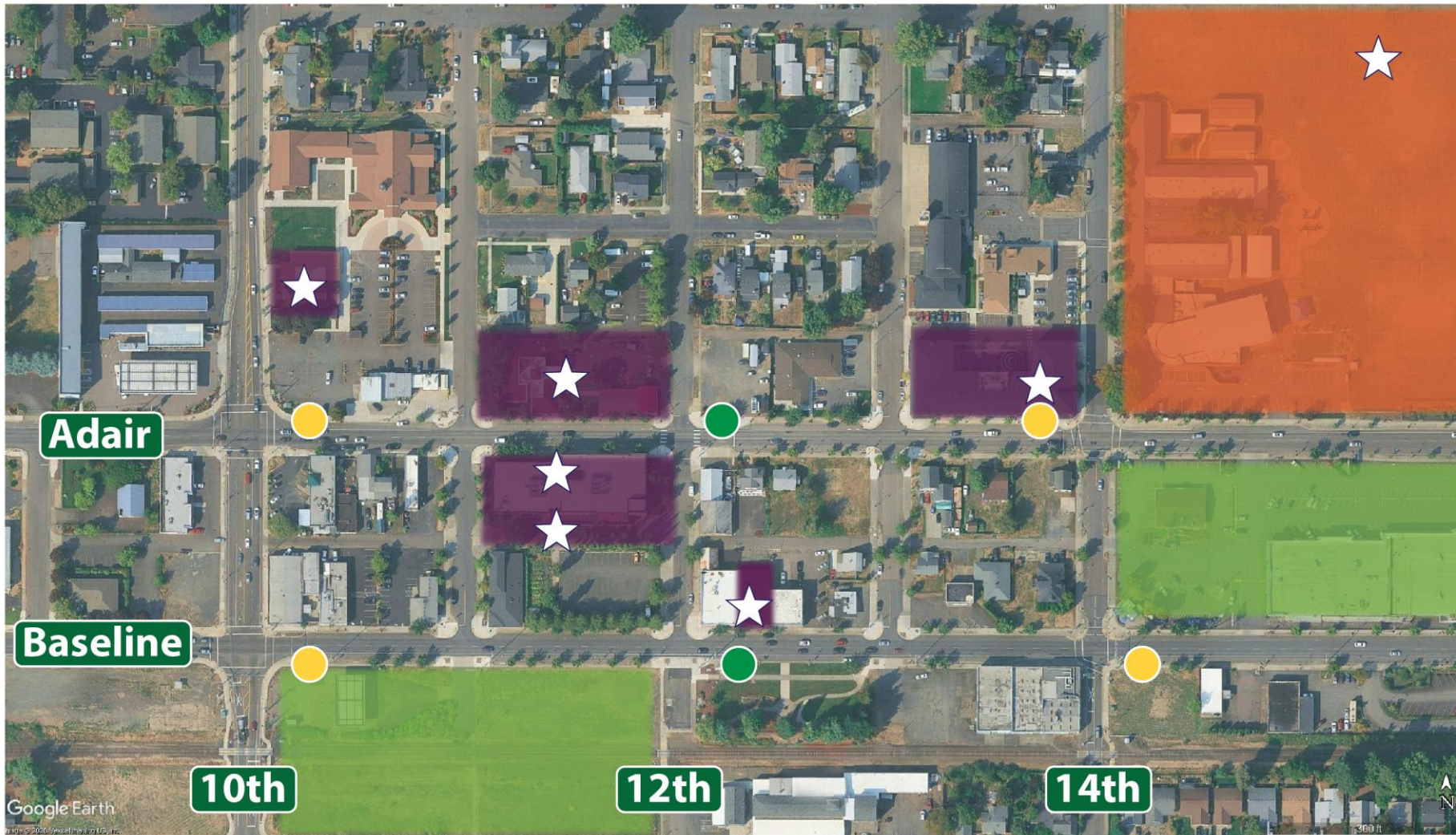


1/3 Mile Walkshed – Option C – 10th, 14th & 20th/FM Dwy


Zoomed In Context – Two Focus Areas



Preliminary Proposed Station Locations



LEGEND

-  New Elementary School, Future Community Center and Plaza
-  City Owned Property for Development (Details TBD)
-  Key Community Destinations
-  Option A - 12th
-  Options B & C - 10th & 14th
-  Assumed Entry

Site Context for the 10th, 12th, and 14th Area

	WESTBOUND			EASTBOUND		
	10th	12th	14th	10th	12th	14th
St. Alexander Catholic Church	290 feet <i>1 block</i>	900 feet <i>3 blocks</i>		670 feet <i>2 blocks</i>	1,315 feet <i>4 blocks</i>	
Virginia Garcia	580 feet <i>2 blocks</i>	285 feet <i>1 block</i>		690 feet <i>2 1/2 blocks</i>	480 feet <i>1 3/4 blocks</i>	
Centro Cultural	410 feet <i>1 block</i>	275 feet <i>3/4 block</i>		925 feet <i>3 blocks</i>	685 feet <i>2 blocks</i>	
Centro Mercado		450 feet <i>1 block</i>	860 feet <i>3 blocks</i>		220 feet <i>1/2 block</i>	660 feet <i>2 blocks</i>
Cornelius Library		535 feet <i>2 blocks</i>	80 feet <i>1/4 block</i>		950 feet <i>3 blocks</i>	565 feet <i>2 blocks</i>
Cornelius Elementary School		1,535 feet <i>5 blocks</i>	1,070 feet <i>3 blocks</i>		1,875 feet <i>5 1/2 blocks</i>	1,385 feet <i>4 1/4 blocks</i>

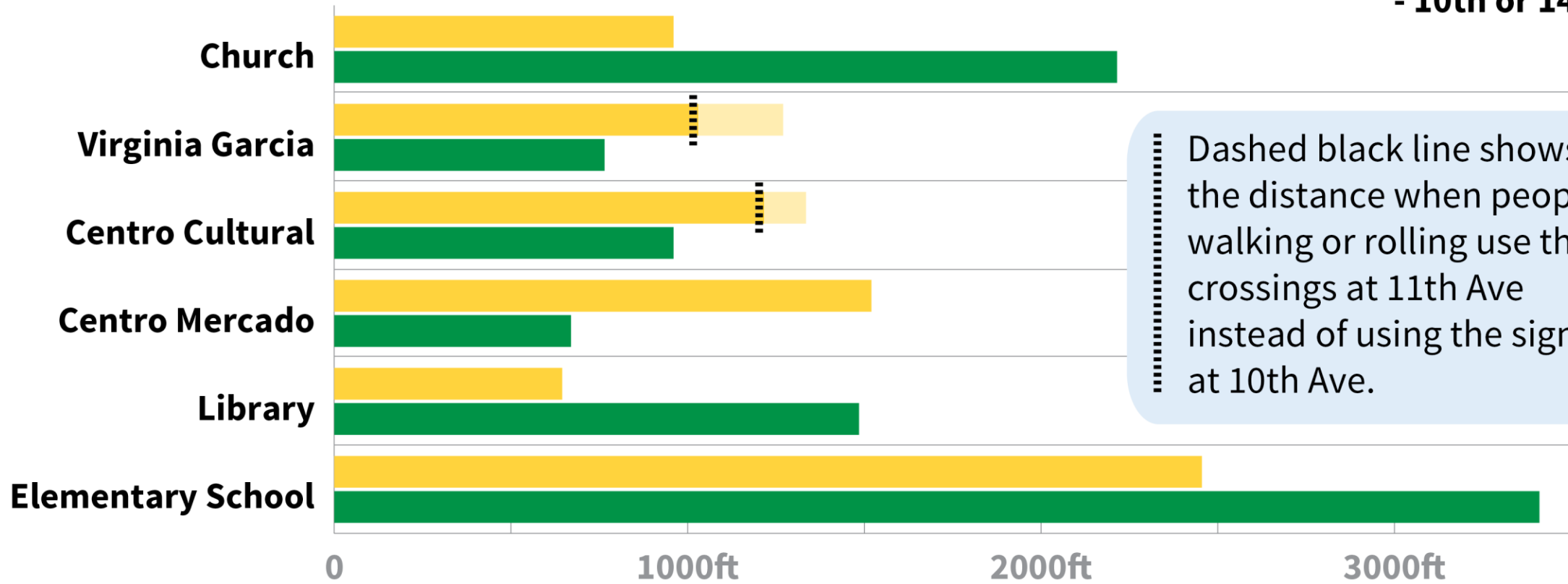
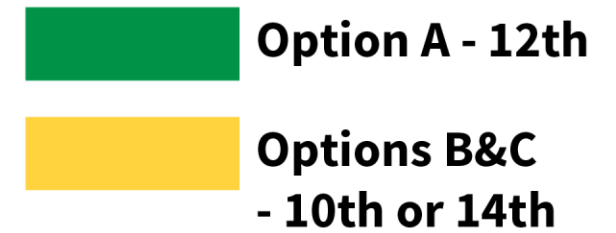
LEGEND

- Option A - 12th
- Options B & C - 10th & 14th

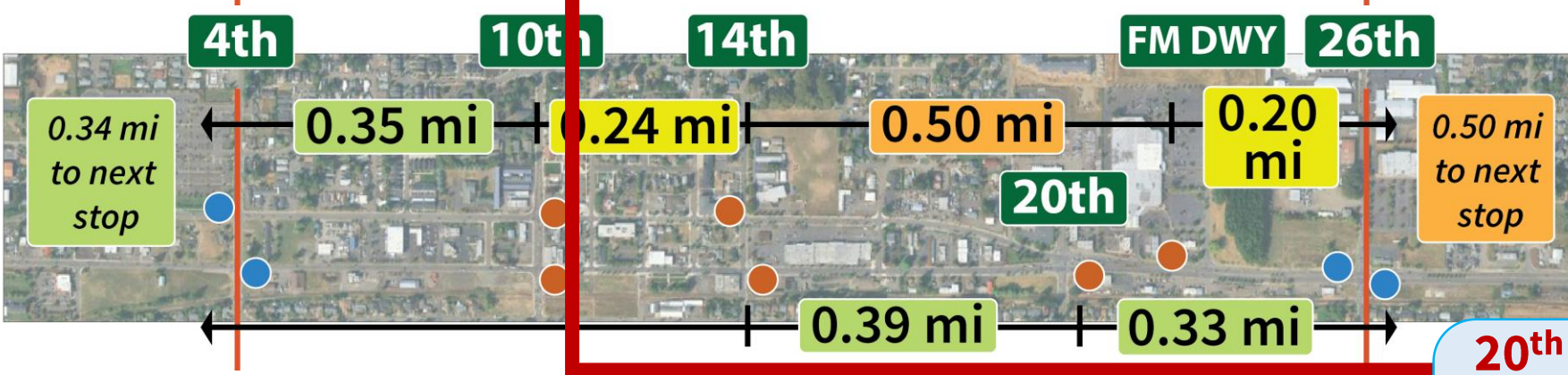
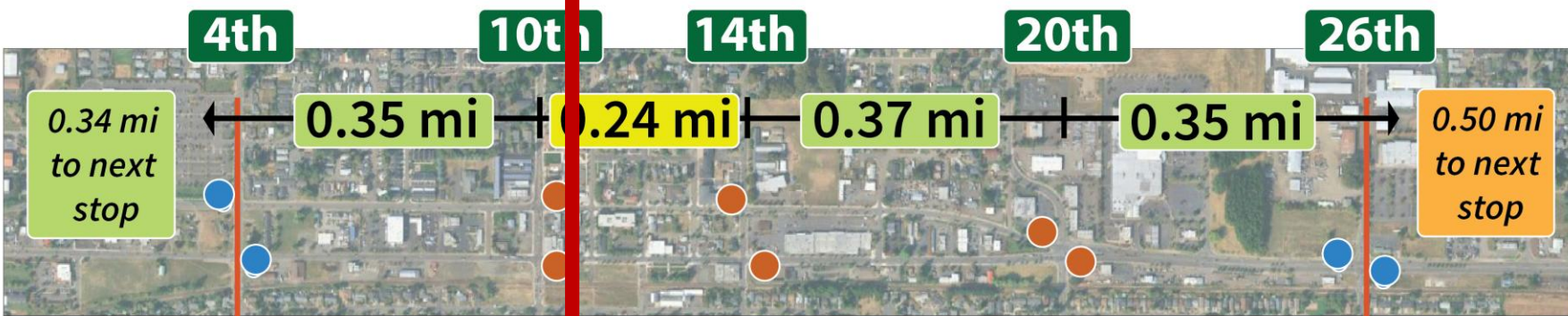
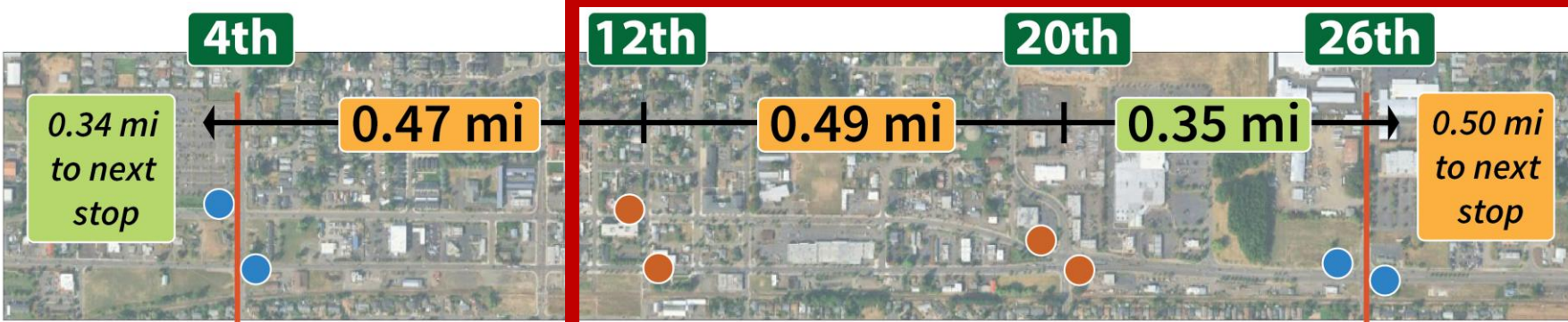
Walking Distances in feet and blocks



Total Walking Distance - Round Trip



Dashed black line shows the distance when people walking or rolling use the crossings at 11th Ave instead of using the signal at 10th Ave.



In a consistently built-up area like this, there is a range of spacing that is viable.

Recommended:
1/3 (0.33) miles to
1/2 (0.5) miles

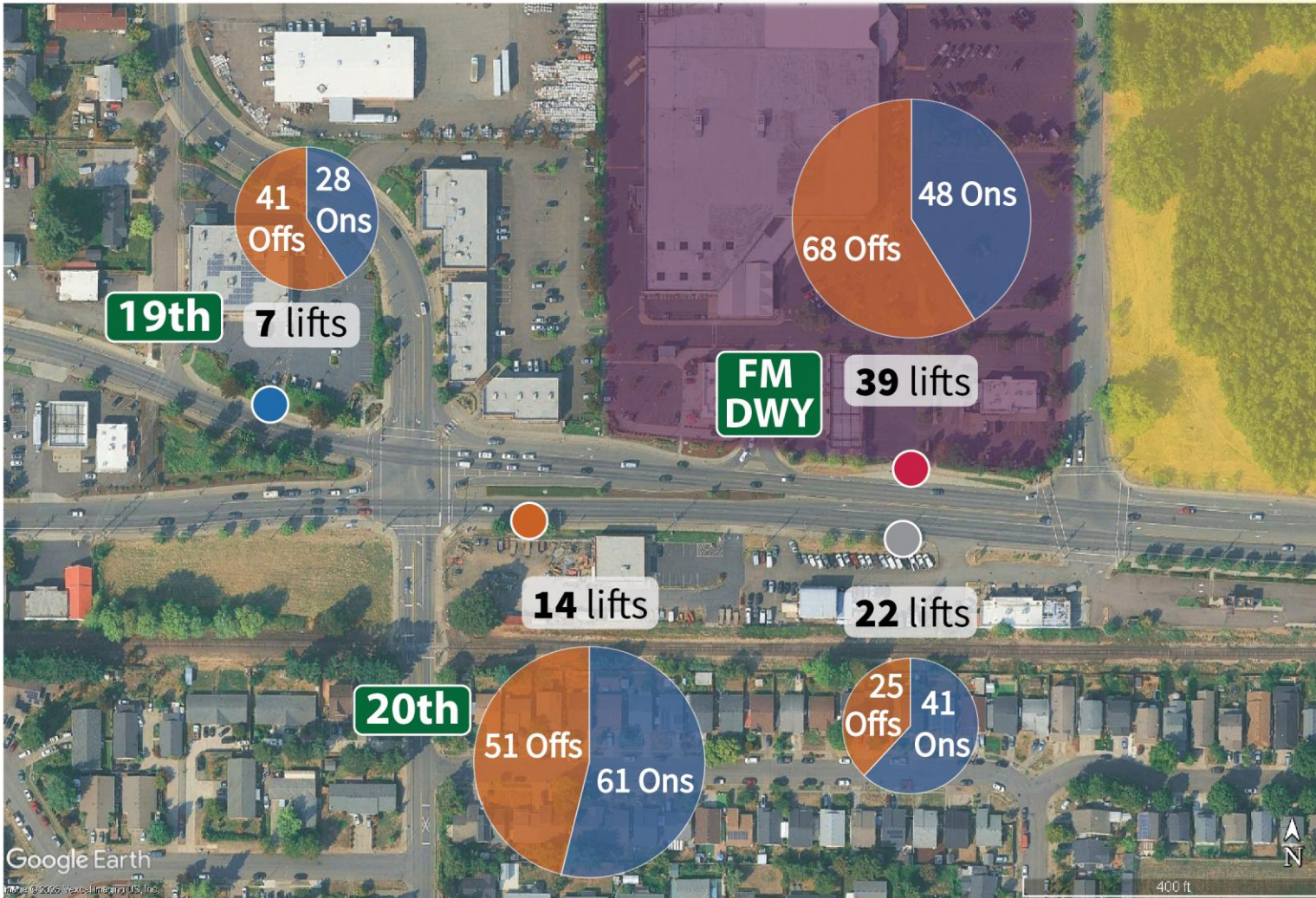
Minimum:
1/4 (0.25) miles,
though closer may be necessary

LEGEND

- lower end
- average
- higher end

Station Placement Combination Options for Discussion

20th & FM DWY
Options A + B
compared to
Option C



Site Context for the 20th and Fred Meyer Driveway Area